



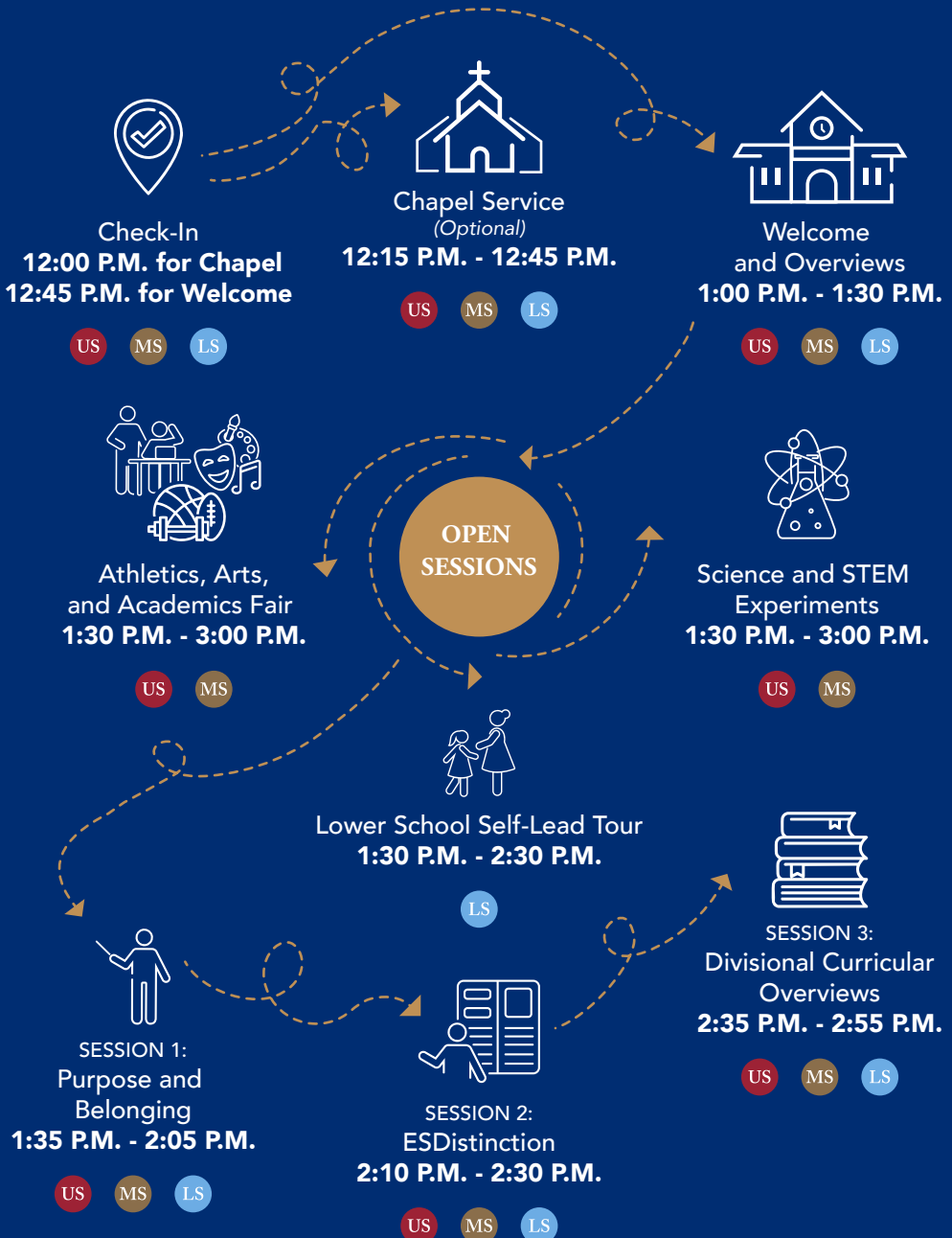
2024

EXPLORE

DECEMBER 8

EXPLORE ESD OPEN HOUSE

Discover your Purpose and Find a Sense of Belonging at The Episcopal School of Dallas



PARTICIPANT KEY

Upper School

Middle School

Lower School



EXPLORE ESD

12:00 P.M. Check-In 1

Check in for optional chapel.

12:15 P.M.-12:45 P.M. Chapel Service (Optional) 1

Wondering what daily worship is like at ESD? You're invited to kick off Explore ESD with a worship service in All Saints Chapel so that you can get a feel for daily worship at ESD and witness first hand how we live out our Episcopal identity.

- 12:45 P.M.-1:00 P.M. Check-In**
- 2 Lower School.....Frank Building
 - 5 Middle School.....Study Commons
 - 5 Upper School.....Study Commons

- 1:00 P.M.-1:30 P.M. Welcome and Overview**
- Gather to learn more about your school needs by your division.
- 2 Lower School.....Bray Theater
 - 1 Middle School.....All Saints Chapel
 - 4 Upper School.....Competition Gym

1:35 P.M.-2:05 P.M. SESSION 1 Purpose and Belonging 1

Join Head of School, Dave Baad for a meaningful conversation about ESD's core values of purpose and belonging. Learn how we foster these principles daily, helping students discover their unique potential and sense of community within our school.



2:10 P.M.-2:30 P.M. SESSION 2 ESDistinction 5

Discover ESDistinction, our unique program that tailors learning to each student. Through a blend of essential skill-building, passion-driven projects, and hands-on real-world experiences, this personalized curriculum supports growth from the earliest years through senior year, preparing students to thrive in any future path.

2:35 P.M.-2:55 P.M. SESSION 3 Divisional Curricular Overviews

Dive into ESD's comprehensive curriculum. Each divisional session provides an in-depth look at the academic approach for Lower, Middle, and Upper School, detailing how we build foundational skills and nurture intellectual growth at every stage.

- 3 Lower School.....RoCS
- 2 Middle School.....Bell Theater
- 2 Upper School.....Bray

MAP KEY

- 1 All Saints Chapel
- 2 Susan M. Frank Center for Arts & Humanities
Bray Performance Hall
Bell Theater
- 3 Lower School
RoCS
- 4 Stephen B. Swann Athletic & Wellness Center
Aux Gym
Competition Gym
Dining Commons
Haggar Gym
- 5 School House
Study Commons
Library



OPEN SESSIONS

**1:30 P.M.-
2:30 P.M.** **Lower School Self-Lead Tour*** **3**

Explore our Lower School at your own pace. Attendees are welcome to walk through classrooms, experience our vibrant learning spaces, and speak with teachers about life in the Lower School.

**1:30 P.M.-
3:00 P.M.** **Science and STEM Experiments** **4**

Get hands-on with STEM. Kids are invited to join exciting, interactive experiments designed to spark curiosity and showcase the innovative learning that happens in our STEM programs.

**1:30 P.M.-
3:00 P.M.** **Athletics, Arts, and Academics Fairs** **4**

Meet our coaches, fine arts teachers, and department chairs and discover the strengths of each discipline and program.

DEADLINES

Early Childhood (Beginner, Pre-K, and Kindergarten) Application deadline **December 13**

Grades 1-11 Application deadline **January 13**

Testing, Visit, Records, and Evaluation deadline **February 1**

Tuition Assistance deadline **February 15**

Admission and Tuition Assistance decisions released **March 14**

**Adults Only.*



Cindy Newsom
Director of Enrollment Management



Megan Schroeder, '09
Assistant Director of Admission, Upper School



Margaret Wilson, '11
Assistant Director of Admission, Middle School



Rachael Bingham
Assistant Director of Admission, Lower School



Shelle Montgomery
Director of Tuition Assistance



Corey Henderson
Admission Associate